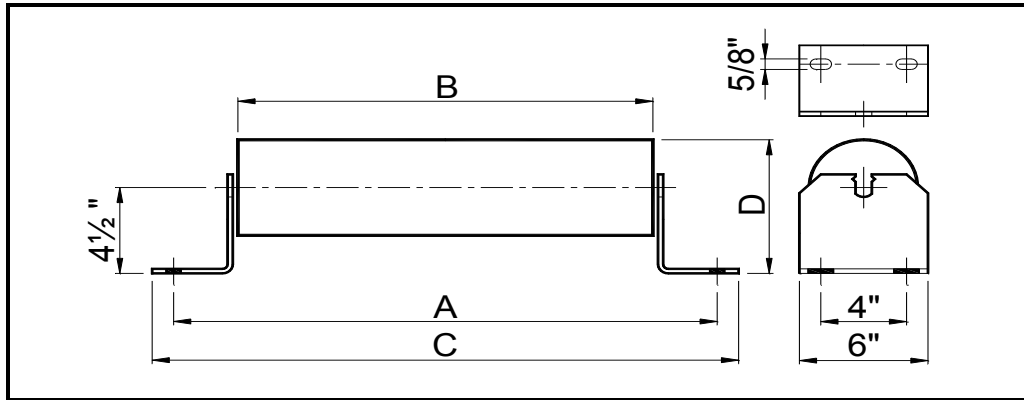




FLAT CARRY IDLER



5" ROLL

BELT WIDTH	IDLER PART NUMBER	ROLL PART NUMBER	A	B	C	D	IDLER WEIGHT	ROLL WEIGHT	ROLL ROTATING WEIGHT	SHAFT Ø	BRG TYPE
18	MC5-1800-FTC	MC-RR-5-18	27	21 1/8	29	7	26	22	17	1	6205
24	MC5-2400-FTC	MC-RR-5-24	33	27 1/8	35	7	31	27	21	1	6205
30	MC5-3000-FTC	MC-RR-5-30	39	33 1/8	41	7	36	32	24	1	6205
36	MC5-3600-FTC	MC-RR-5-36	45	39 1/8	47	7	42	37	28	1	6205
42	MC5-4200-FTC	MC-RR-5-42	51	45 1/8	53	7	47	42	32	1	6205
48	MC5-4800-FTC	MC-RR-5-48	57	51 1/8	59	7	52	48	36	1	6205
54	MC5-5400-FTC	MC-RR-5-54	63	57 1/8	65	7	57	53	40	1 1/4* - 1	6205
60	MC5-6000-FTC	MC-RR-5-60	69	63 1/8	71	7	62	58	44	1 1/4* - 1	6205
66	MC5-6600-FTC	MC-RR-5-66	75	69	77	7	75	71	55	1 1/4* - 1	6205

6" ROLL

BELT WIDTH	IDLER PART NUMBER	ROLL PART NUMBER	A	B	C	D	IDLER WEIGHT	ROLL WEIGHT	ROLL ROTATING WEIGHT	SHAFT Ø	BRG TYPE
18	MC6-1800-FTC	MC-RR-6-18	27	21 1/8	29	7 1/2	31	26	22	1	6205
24	MC6-2400-FTC	MC-RR-6-24	33	27 1/8	35	7 1/2	36	32	26	1	6205
30	MC6-3000-FTC	MC-RR-6-30	39	33 1/8	41	7 1/2	43	38	31	1	6205
36	MC6-3600-FTC	MC-RR-6-36	45	39 1/8	47	7 1/2	49	45	36	1	6205
42	MC6-4200-FTC	MC-RR-6-42	51	45 1/8	53	7 1/2	55	51	41	1	6205
48	MC6-4800-FTC	MC-RR-6-48	57	51 1/8	59	7 1/2	61	57	46	1	6205
54	MC6-5400-FTC	MC-RR-6-54	63	57 1/8	65	7 1/2	71	66	54	1 1/4* - 1	6205
60	MC6-6000-FTC	MC-RR-6-60	69	63 1/8	71	7 1/2	80	75	61	1 1/4* - 1	6205
66	MC6-6600-FTC	MC-RR-6-66	75	69	77	7 1/2	89	85	69	1 1/4* - 1	6205

NOTES :

1. Also available with wide mounting centers = A + 6"
2. Dimensions in Inches, Weights in lbs
3. Flat carry idler also available with 1-1/2" drop height.
4. * 1-1/4" diameter shaft stepped-down to 1" diameter at the bearing.