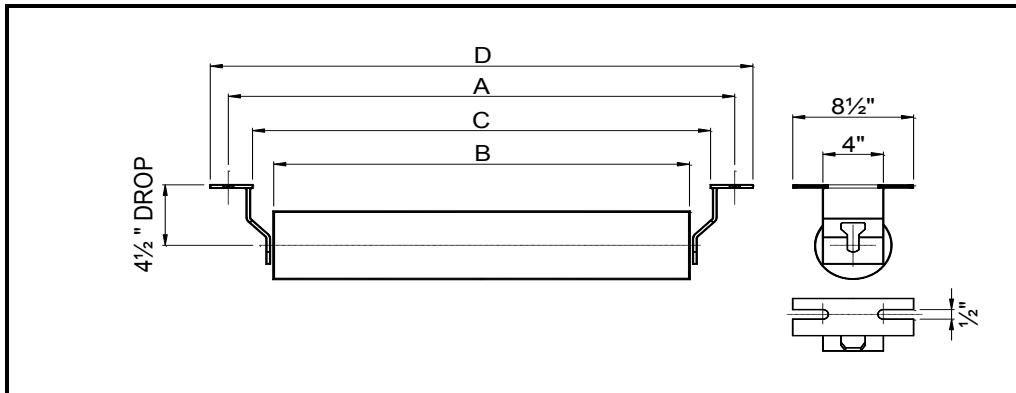




FLAT RETURN IDLER



5" ROLL

BELT WIDTH	IDLER PART NUMBER	ROLL PART NUMBER	A	B	C	D	IDLER WEIGHT	ROLL WEIGHT	ROLL ROTATING WEIGHT	SHAFT Ø	BRG TYPE
18	MC5-1800-RET	MC-RR-5-18	27	21 1/8	23	29 1/2	27	22	17	1	6205
24	MC5-2400-RET	MC-RR-5-24	33	27 1/8	29	35 1/2	32	27	21	1	6205
30	MC5-3000-RET	MC-RR-5-30	39	33 1/8	35	41 1/2	37	32	24	1	6205
36	MC5-3600-RET	MC-RR-5-36	45	39 1/8	41	47 1/2	42	37	28	1	6205
42	MC5-4200-RET	MC-RR-5-42	51	45 1/8	47	53 1/2	47	42	32	1	6205
48	MC5-4800-RET	MC-RR-5-48	57	51 1/8	53	59 1/2	53	48	36	1	6205
54	MC5-5400-RET	MC-RR-5-54	63	57 1/8	59	65 1/2	58	53	40	1 1/4* - 1	6205
60	MC5-6000-RET	MC-RR-5-60	69	63 1/8	65	71 1/2	63	58	44	1 1/4* - 1	6205
66	MC5-6600-RET	MC-RR-5-66	75	69	71	77 1/2	76	71	55	1 1/4* - 1	6205

6" ROLL

BELT WIDTH	IDLER PART NUMBER	ROLL PART NUMBER	A	B	C	D	IDLER WEIGHT	ROLL WEIGHT	ROLL ROTATING WEIGHT	SHAFT Ø	BRG TYPE
18	MC6-1800-RET	MC-RR-6-18	27	21 1/8	23	29 1/2	32	26	22	1	6205
24	MC6-2400-RET	MC-RR-6-24	33	27 1/8	29	35 1/2	37	32	26	1	6205
30	MC6-3000-RET	MC-RR-6-30	39	33 1/8	35	41 1/2	43	38	31	1	6205
36	MC6-3600-RET	MC-RR-6-36	45	39 1/8	41	47 1/2	50	45	36	1	6205
42	MC6-4200-RET	MC-RR-6-42	51	45 1/8	47	53 1/2	56	51	41	1	6205
48	MC6-4800-RET	MC-RR-6-48	57	51 1/8	53	59 1/2	62	57	46	1	6205
54	MC6-5400-RET	MC-RR-6-54	63	57 1/8	59	65 1/2	71	66	54	1 1/4* - 1	6205
60	MC6-6000-RET	MC-RR-6-60	69	63 1/8	65	71 1/2	81	75	61	1 1/4* - 1	6205
66	MC6-6600-RET	MC-RR-6-66	75	69	71	77 1/2	88	83	68	1 1/4* - 1	6205

NOTES :

1. Also available with wide mounting centers = A + 6"
2. Dimensions in Inches, Weights in lbs
3. Flat return idler also available with 1-1/2 inch drop.
4. V-Return idler also available with 4-1/2 inch drop.
5. * 1-1/4" diameter shaft stepped-down to 1" diameter at the bearing.