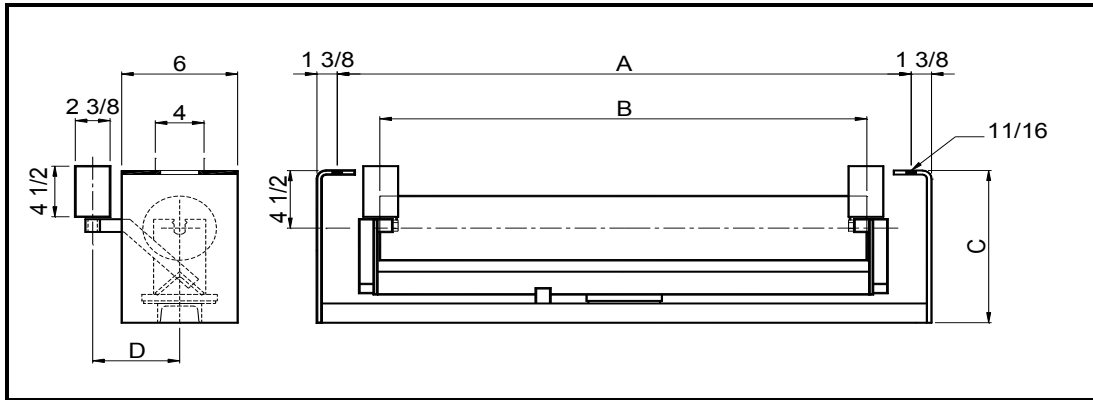




## FLAT RETURN SELF ALIGNING IDLER



### 5" ROLL

BELT WIDTH	IDLER PART NUMBER	ROLL PART NUMBER	A	B	C	D	IDLER WEIGHT	ROLL WEIGHT	ROLL ROTATING WEIGHT	SHAFT Ø	BRG TYPE
18	MC5-1800-RET-SA	MC-RR-5-18	27	21 1/8	12 4/9	6	77	22	17	1	6205
24	<b>MC5-2400-RET-SA</b>	<b>MC-RR-5-24</b>	<b>33</b>	<b>27 1/8</b>	<b>12 4/9</b>	<b>6</b>	<b>89</b>	<b>27</b>	<b>21</b>	<b>1</b>	<b>6205</b>
30	MC5-3000-RET-SA	MC-RR-5-30	39	33 1/8	12 5/8	6	103	32	24	1	6205
36	<b>MC5-3600-RET-SA</b>	<b>MC-RR-5-36</b>	<b>45</b>	<b>39 1/8</b>	<b>12 5/8</b>	<b>8</b>	<b>117</b>	<b>37</b>	<b>28</b>	<b>1</b>	<b>6205</b>
42	MC5-4200-RET-SA	MC-RR-5-42	51	45 1/8	12 7/8	8	131	42	32	1	6205
48	<b>MC5-4800-RET-SA</b>	<b>MC-RR-5-48</b>	<b>57</b>	<b>51 1/8</b>	<b>12 15/16</b>	<b>8</b>	<b>142</b>	<b>48</b>	<b>36</b>	<b>1</b>	<b>6205</b>
54	MC5-5400-RET-SA	MC-RR-5-54	63	57 1/8	12 15/16	8	158	53	40	1 1/4 - 1	6205
60	<b>MC5-6000-RET-SA</b>	<b>MC-RR-5-60</b>	<b>69</b>	<b>63 1/8</b>	<b>12 15/16</b>	<b>8</b>	<b>168</b>	<b>58</b>	<b>44</b>	<b>1 1/4 - 1</b>	<b>6205</b>
66	MC5-6600-RET-SA	MC-RR-5-66	75	69	12 15/16	8	192	71	55	1 1/4 - 1	6205

### 6" ROLL

BELT WIDTH	IDLER PART NUMBER	ROLL PART NUMBER	A	B	C	D	IDLER WEIGHT	ROLL WEIGHT	ROLL ROTATING WEIGHT	SHAFT Ø	BRG TYPE
24	MC6-2400-RET-SA	MC-RR-6-24	33	27 1/8	12 4/9	6	94	32	26	1	6205
30	<b>MC6-3000-RET-SA</b>	<b>MC-RR-6-30</b>	<b>39</b>	<b>33 1/8</b>	<b>12 5/8</b>	<b>6</b>	<b>109</b>	<b>38</b>	<b>31</b>	<b>1</b>	<b>6205</b>
36	MC6-3600-RET-SA	MC-RR-6-36	45	39 1/8	12 5/8	8	124	45	36	1	6205
42	<b>MC6-4200-RET-SA</b>	<b>MC-RR-6-42</b>	<b>51</b>	<b>45 1/8</b>	<b>12 7/8</b>	<b>8</b>	<b>139</b>	<b>51</b>	<b>41</b>	<b>1</b>	<b>6205</b>
48	MC6-4800-RET-SA	MC-RR-6-48	57	51 1/8	12 15/16	8	152	57	46	1	6205
54	<b>MC6-5400-RET-SA</b>	<b>MC-RR-6-54</b>	<b>63</b>	<b>57 1/8</b>	<b>12 15/16</b>	<b>8</b>	<b>172</b>	<b>66</b>	<b>54</b>	<b>1 1/4 - 1</b>	<b>6205</b>
60	MC6-6000-RET-SA	MC-RR-6-60	69	63 1/8	12 15/16	8	186	75	54	1 1/4 - 1	6205
66	<b>MC6-6600-RET-SA</b>	<b>MC-RR-6-66</b>	<b>75</b>	<b>69</b>	<b>12 15/16</b>	<b>8</b>	<b>202</b>	<b>83</b>	<b>68</b>	<b>1 1/4 - 1</b>	<b>6205</b>

#### NOTES :

1. Also available with 1-1/2" drop.
2. Also available with wide mounting centers = A + 6"
3. Dimensions in Inches, Weights in lbs
4. Note actual drop height will be approximately 5/8" smaller for correct tamer operation
5. \* 1-1/4" diameter shaft stepped-down to 1" diameter at the bearing.