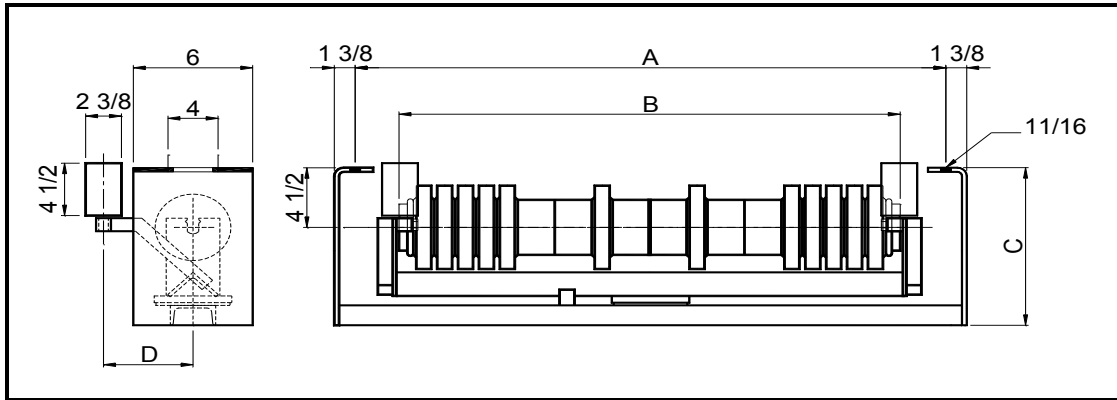




FLAT RUBBER DISC RETURN SELF ALIGNING IDLER



5" RUBBER DISC ROLL

BELT WIDTH	IDLER PART NUMBER	ROLL PART NUMBER	A	B	C	D	IDLER WEIGHT	ROLL WEIGHT	ROLL ROTATING WEIGHT	SHAFT Ø	BRG TYPE
18	MC5-1800-RETSA-RD	MC-DR-5-18	27	21 1/8	12 4/9	6	78	23	18	1	6205
24	MC5-2400-RETSA-RD	MC-DR-5-24	33	27 1/8	12 4/9	6	90	28	22	1	6205
30	MC5-3000-RETSA-RD	MC-DR-5-30	39	33 1/8	12 5/8	6	103	32	25	1	6205
36	MC5-3600-RETSA-RD	MC-DR-5-36	45	39 1/8	12 5/8	8	114	35	26	1	6205
42	MC5-4200-RETSA-RD	MC-DR-5-42	51	45 1/8	12 7/8	8	128	39	29	1	6205
48	MC5-4800-RETSA-RD	MC-DR-5-48	57	51 1/8	12 15/16	8	139	44	32	1	6205
54	MC5-5400-RETSA-RD	MC-DR-5-54	63	57 1/8	12 15/16	8	154	48	36	1 1/4* - 1	6205
60	MC5-6000-RETSA-RD	MC-DR-5-60	69	63 1/8	12 15/16	8	163	52	38	1 1/4* - 1	6205
66	MC5-6600-RETSA-RD	MC-DR-5-66	75	69	12 15/16	8	185	68	53	1 1/4* - 1	6205

6" RUBBER DISC ROLL

BELT WIDTH	IDLER PART NUMBER	ROLL PART NUMBER	A	B	C	D	IDLER WEIGHT	ROLL WEIGHT	ROLL ROTATING WEIGHT	SHAFT Ø	BRG TYPE
24	MC6-2400-RETSA-RD	MC-DR-6-24	33	27 1/8	12 4/9	6	90	28	22	1	6205
30	MC6-3000-RETSA-RD	MC-DR-6-30	39	33 1/8	12 5/8	6	103	32	25	1	6205
36	MC6-3600-RETSA-RD	MC-DR-6-36	45	39 1/8	12 5/8	8	119	40	31	1	6205
42	MC6-4200-RETSA-RD	MC-DR-6-42	51	45 1/8	12 7/8	8	138	50	39	1	6205
48	MC6-4800-RETSA-RD	MC-DR-6-48	57	51 1/8	12 15/16	8	159	64	53	1	6205
54	MC6-5400-RETSA-RD	MC-DR-6-54	63	57 1/8	12 15/16	8	174	68	55	1 1/4* - 1	6205
60	MC6-6000-RETSA-RD	MC-DR-6-60	69	63 1/8	12 15/16	8	290	70	56	1 1/4* - 1	6205
66	MC6-6600-RETSA-RD	MC-DR-6-66	75	69	12 15/16	8	309	75	60	1 1/4* - 1	6205

NOTES :

1. Also available with 1-1/2" drop.
2. Also available with wide mounting centers = A + 6"
3. Dimensions in Inches, Weights in lbs
4. Note actual drop height will be approximately 5/8" smaller for correct tamer operation
5. * 1-1/4" diameter shaft stepped-down to 1" diameter at the bearing.