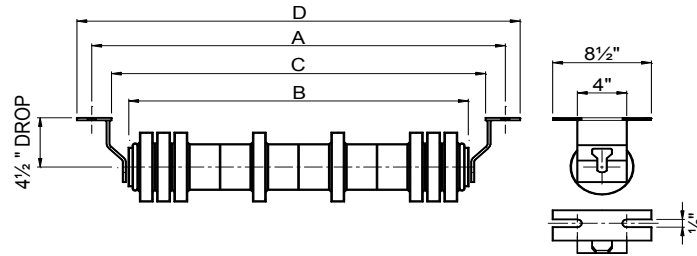




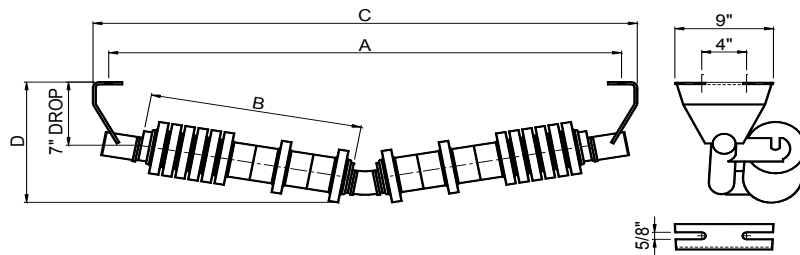
FLAT RUBBER DISC RETURN IDLER



6" ROLL

BELT WIDTH	IDLER PART NUMBER	ROLL PART NUMBER	A	B	C	D	IDLER WEIGHT	ROLL WEIGHT	ROLL ROTATING WEIGHT	SHAFT Ø	BRG TYPE
18	MC6-1800-RET-RD	MC-DR-6-18	27	21 1/8	23	29 1/2	27	22	17	1	6205
24	MC6-2400-RET-RD	MC-DR-6-24	33	27 1/8	29	35 1/2	33	28	22	1	6205
30	MC6-3000-RET-RD	MC-DR-6-30	39	33 1/8	35	41 1/2	37	32	25	1	6205
36	MC6-3600-RET-RD	MC-DR-6-36	45	39 1/8	41	47 1/2	45	40	31	1	6205
42	MC6-4200-RET-RD	MC-DR-6-42	51	45 1/8	47	53 1/2	55	50	39	1	6205
48	MC6-4800-RET-RD	MC-DR-6-48	57	51 1/8	53	59 1/2	70	64	53	1	6205
54	MC6-5400-RET-RD	MC-DR-6-54	63	57 1/8	59	65 1/2	73	68	55	1 1/4" - 1	6205
60	MC6-6000-RET-RD	MC-DR-6-60	69	63 1/8	65	71 1/2	75	70	56	1 1/4" - 1	6205
66	MC6-6600-RET-RD	MC-DR-6-66	75	69	71	71 1/2	80	75	60	1 1/4" - 1	6205

10° RUBBER DISC V-RETURN IDLER



6" ROLL

BELT WIDTH	IDLER PART NUMBER	ROLL PART NUMBER	A	B	C	D	IDLER WEIGHT	ROLL WEIGHT	ROLL ROTATING WEIGHT	SHAFT Ø	BRG TYPE
24	MC6-2410-VRET-RD	MC-VDR-6-24	33	11 3/4	36	15 7/8	46	17	14	1	6205
30	MC6-3010-VRET-RD	MC-VDR-6-30	39	15 3/4	42	16 3/8	57	22	18	1	6205
36	MC6-3610-VRET-RD	MC-VDR-6-36	45	18 3/4	48	16 3/4	60	22	18	1	6205
42	MC6-4210-VRET-RD	MC-VDR-6-42	51	22	54	17 3/8	65	23	18	1	6205
48	MC6-4810-VRET-RD	MC-VDR-6-48	57	25	60	17 7/8	75	26	21	1	6205
54	MC6-5410-VRET-RD	MC-VDR-6-54	63	28 3/8	66	18 7/8	86	29	22	1	6205
60	MC6-6010-VRET-RD	MC-VDR-6-60	69	31 1/2	72	19 1/2	99	31	24	1	6205
66	MC6-6610-VRET-RD	MC-VDR-6-66	75	35	78	19 3/8	105	34	26	1	6205

NOTES :

1. Also available with wide mounting centers = A + 6"
2. Dimensions in Inches, Weights in lbs
3. Flat return idler also available with 1-1/2 inch drop.
4. V-Return idler also available with 4-1/2 inch drop.
5. * 1-1/4" diameter shaft stepped-down to 1" diameter at the bearing.

Information subject to change without notice. Certified information available upon request