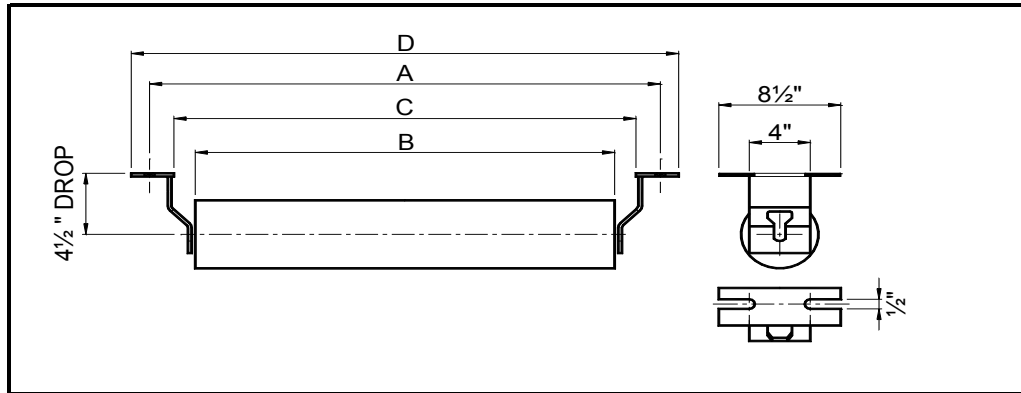




FLAT RETURN IDLER



5" ROLL

BELT WIDTH	IDLER PART NUMBER	ROLL PART NUMBER	A	B	C	D	IDLER WEIGHT	ROLL WEIGHT	ROLL ROTATING WEIGHT	SHAFT Ø	BRG TYPE
24	MD5-2400-RET	MD-RR-5-24	33	27 1/8	29	35 1/2	36	31	23	1-1/4* - 1	6305
30	MD5-3000-RET	MD-RR-5-30	39	33 1/8	35	41 1/2	42	37	27	1-1/4* - 1	6305
36	MD5-3600-RET	MD-RR-5-36	45	39 1/8	41	47 1/2	48	43	31	1-1/4* - 1	6305
42	MD5-4200-RET	MD-RR-5-42	51	45 1/8	47	53 1/2	53	48	35	1-1/4* - 1	6305
48	MD5-4800-RET	MD-RR-5-48	57	51 1/8	53	59 1/2	59	54	39	1-1/4* - 1	6305
54	MD5-5400-RET	MD-RR-5-54	63	57 1/8	59	65 1/2	65	60	42	1-1/4* - 1	6305
60	MD5-6000-RET	MD-RR-5-60	69	63 1/8	65	71 1/2	70	65	46	1-1/4* - 1	6305
66	MD5-6600-RET	MD-RR-5-66	75	69	71	77 1/2	76	71	50	1-1/4* - 1	6305
72	MD5-7200-RET	MD-RR-5-72	81	75 1/8	77	83 1/2	82	77	54	1-1/4* - 1	6305
78	MD5-7800-RET	MD-RR-5-78	87	81 1/8	83	89 1/2	87	82	58	1-1/4* - 1	6305

6" ROLL

BELT WIDTH	IDLER PART NUMBER	ROLL PART NUMBER	A	B	C	D	IDLER WEIGHT	ROLL WEIGHT	ROLL ROTATING WEIGHT	SHAFT Ø	BRG TYPE
24	MD6-2400-RET	MD-RR-6-24	33	27 1/8	29	35 1/2	44	39	31	1-1/4* - 1	6305
30	MD6-3000-RET	MD-RR-6-30	39	33 1/8	35	41 1/2	52	47	37	1-1/4* - 1	6305
36	MD6-3600-RET	MD-RR-6-36	45	39 1/8	41	47 1/2	59	54	42	1-1/4* - 1	6305
42	MD6-4200-RET	MD-RR-6-42	51	45 1/8	47	53 1/2	66	61	48	1-1/4* - 1	6305
48	MD6-4800-RET	MD-RR-6-48	57	51 1/8	53	59 1/2	73	68	53	1-1/4* - 1	6305
54	MD6-5400-RET	MD-RR-6-54	63	57 1/8	59	65 1/2	81	76	59	1-1/4* - 1	6305
60	MD6-6000-RET	MD-RR-6-60	69	63 1/8	65	71 1/2	88	83	64	1-1/4* - 1	6305
66	MD6-6600-RET	MD-RR-6-66	75	69	71	77 1/2	95	90	70	1-1/4* - 1	6305
72	MD6-7200-RET	MD-RR-6-72	81	75 1/8	77	83 1/2	103	98	75	1-1/4* - 1	6305
78	MD6-7800-RET	MD-RR-6-78	87	81 1/8	83	89 1/2	110	105	81	1-1/4* - 1	6305

NOTES :

1. Also available with wide mounting centers = A + 6"
2. Dimensions in Inches, Weights in lbs
3. Flat return idler also available with 1-1/2 inch drop.