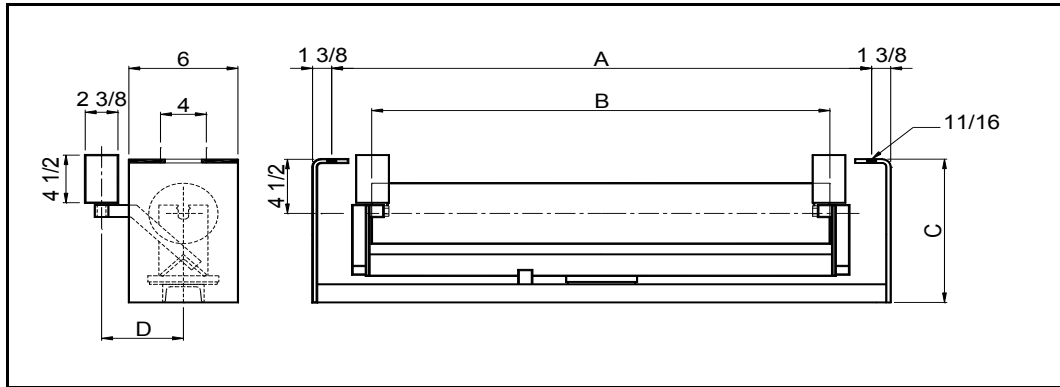




FLAT RETURN SELF ALIGNING IDLER



5" ROLL

BELT WIDTH	IDLER PART NUMBER	ROLL PART NUMBER	A	B	C	D	IDLER WEIGHT	ROLL WEIGHT	ROLL ROTATING WEIGHT	SHAFT Ø	BRG TYPE
24	MD5-2400-RET-SA	MD-RR-5-24	33	27 1/8	12 4/9	6	93	31	23	1 -1/4*-1	6305
30	MD5-3000-RET-SA	MD-RR-5-30	39	33 1/8	12 5/8	6	107	37	27	1 -1/4*-1	6305
36	MD5-3600-RET-SA	MD-RR-5-36	45	39 1/8	12 5/8	8	122	43	31	1 -1/4*-1	6305
42	MD5-4200-RET-SA	MD-RR-5-42	51	45 1/8	12 7/8	8	136	48	35	1 -1/4*-1	6305
48	MD5-4800-RET-SA	MD-RR-5-48	57	51 1/8	12 15/16	8	149	54	39	1 -1/4*-1	6305
54	MD5-5400-RET-SA	MD-RR-5-54	63	57 1/8	12 15/16	8	165	60	42	1 -1/4*-1	6305
60	MD5-6000-RET-SA	MD-RR-5-60	69	63 1/8	12 15/16	8	175	65	46	1 -1/4*-1	6305
66	MD5-6600-RET-SA	MD-RR-5-66	75	69	12 15/16	8	190	71	50	1 -1/4*-1	6305
72	MD5-7200-RET-SA	MD-RR-5-72	81	75 1/8	12 15/16	8	202	77	54	1 -1/4*-1	6305
78	MD5-7800-RET-SA	MD-RR-5-78	87	81 1/8	12 15/16	8	217	82	58	1 -1/4*-1	6305

6" ROLL

BELT WIDTH	IDLER PART NUMBER	ROLL PART NUMBER	A	B	C	D	IDLER WEIGHT	ROLL WEIGHT	ROLL ROTATING WEIGHT	SHAFT Ø	BRG TYPE
24	MD6-2400-RET-SA	MD-RR-6-24	33	27 1/8	12 4/9	6	101	39	31	1 -1/4*-1	6305
30	MD6-3000-RET-SA	MD-RR-6-30	39	33 1/8	12 5/8	6	117	47	37	1 -1/4*-1	6305
36	MD6-3600-RET-SA	MD-RR-6-36	45	39 1/8	12 5/8	8	133	54	42	1 -1/4*-1	6305
42	MD6-4200-RET-SA	MD-RR-6-42	51	45 1/8	12 7/8	8	149	61	48	1 -1/4*-1	6305
48	MD6-4800-RET-SA	MD-RR-6-48	57	51 1/8	12 15/16	8	163	68	53	1 -1/4*-1	6305
54	MD6-5400-RET-SA	MD-RR-6-54	63	57 1/8	12 15/16	8	182	76	59	1 -1/4*-1	6305
60	MD6-6000-RET-SA	MD-RR-6-60	69	63 1/8	12 15/16	8	303	83	64	1 -1/4*-1	6305
66	MD6-6600-RET-SA	MD-RR-6-66	75	69	12 15/16	8	311	90	70	1 -1/4*-1	6305
72	MD6-7200-RET-SA	MD-RR-6-72	81	75 1/8	12 15/16	8	336	98	75	1 -1/4*-1	6305
78	MD6-7800-RET-SA	MD-RR-6-78	87	81 1/8	12 15/16	8	343	105	81	1 -1/4*-1	6305

NOTES :

1. Also available with 1-1/2" drop.
2. Also available with wide mounting centers = A + 6"
3. Dimensions in Inches, Weights in lbs
4. Note actual drop height will be approximately 5/8" smaller for correct tamer operation