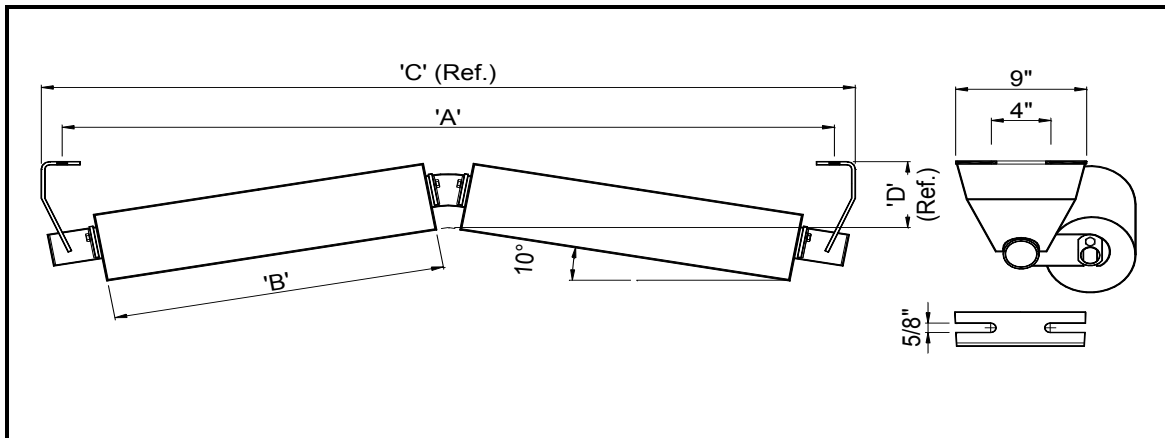




10° INVERTED V RETURN IDLER



5" ROLL

BELT WIDTH	IDLER PART NUMBER	ROLL PART NUMBER	A	B	C	D	IDLER WEIGHT	ROLL WEIGHT	ROLL ROTATING WEIGHT	SHAFT Ø	BRG TYPE
36	MD5-3610-INVRET	MD-VR-5-36	45	18 3/4	48	4 7/8	55	21	15	1 -1/4*-1	6205
42	MD5-4210-INVRET	MD-VR-5-42	51	22	54	5	63	24	17	1 -1/4*-1	6205
48	MD5-4810-INVRET	MD-VR-5-48	57	25	60	5	72	27	19	1 -1/4*-1	6205
54	MD5-5410-INVRET	MD-VR-5-54	63	28 3/8	66	5	84	30	21	1 -1/4*-1	6205
60	MD5-6010-INVRET	MD-VR-5-60	69	31 1/2	72	5 1/8	99	33	23	1 -1/4*-1	6205
66	MD5-6610-INVRET	MD-VR-5-66	75	34 7/8	78	5 1/8	111	36	26	1 -1/4*-1	6205
72	MD5-7210-INVRET	MD-VR-5-72	81	38	84	5 1/4	121	39	28	1 -1/4*-1	6205
78	MD5-7810-INVRET	MD-VR-5-78	87	41 1/2	90	5 1/8	133	43	31	1 -1/4*-1	6205

6" ROLL

BELT WIDTH	IDLER PART NUMBER	ROLL PART NUMBER	A	B	C	D	IDLER WEIGHT	ROLL WEIGHT	ROLL ROTATING WEIGHT	SHAFT Ø	BRG TYPE
36	MD6-3610-INVRET	MD-VR-6-36	45	18 3/4	48	5 3/8	62	25	19	1 -1/4*-1	6205
42	MD6-4210-INVRET	MD-VR-6-42	51	22	54	5 1/2	71	28	21	1 -1/4*-1	6205
48	MD6-4810-INVRET	MD-VR-6-48	57	25	60	5 1/2	82	32	24	1 -1/4*-1	6205
54	MD6-5410-INVRET	MD-VR-6-54	63	28 3/8	66	5 1/2	95	35	27	1 -1/4*-1	6205
60	MD6-6010-INVRET	MD-VR-6-60	69	31 1/2	72	5 1/2	111	39	30	1 -1/4*-1	6205
66	MD6-6610-INVRET	MD-VR-6-66	75	34 7/8	78	5 5/8	124	43	32	1 -1/4*-1	6205
72	MD6-7210-INVRET	MD-VR-6-72	81	38	84	5 3/4	136	46	35	1 -1/4*-1	6205
78	MD6-7810-INVRET	MD-VR-6-78	87	41 1/2	90	5 5/8	144	51	38	1 -1/4*-1	6205

NOTES :

1. Also available with wide mounting centers = A + 6"
2. Dimensions in Inches, Weights in lbs
3. 1-1/4" Diameter shaft stepped down to 1" Diameter at bearing

Information subject to change without notice. Certified information available upon request