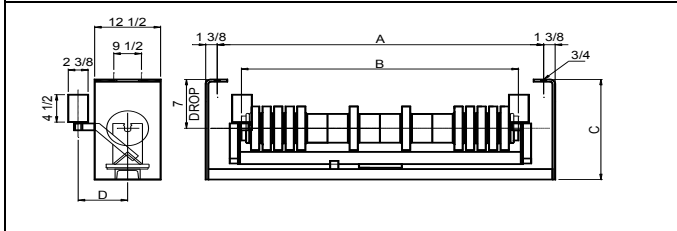




**FLAT RUBBER DISC RETURN SELF ALIGNING IDLER**



**6" RUBBER DISC ROLL**

BELT WIDTH	IDLER PART NUMBER	ROLL PART NUMBER	A	B	C	D	IDLER WEIGHT	ROLL WEIGHT	ROLL ROTATING WEIGHT	SHAFT Ø	BRG TYPE
36	ME6-3600-RETSA-RD	ME-DR-6-36	45	39 1/8	12 4/9	6	115	53	29	1-5/8 - 1-3/16"	6306
42	<b>ME6-4200-RETSA-RD</b>	<b>ME-DR-6-42</b>	<b>51</b>	<b>45 1/8</b>	<b>12 5/8</b>	<b>6</b>	<b>130</b>	<b>59</b>	<b>32</b>	<b>1-5/8 - 1-3/16"</b>	<b>6306</b>
48	ME6-4800-RETSA-RD	ME-DR-6-48	57	51 1/8	12 5/8	8	145	65	35	1-5/8 - 1-3/16"	6306
54	<b>ME6-5400-RETSA-RD</b>	<b>ME-DR-6-54</b>	<b>63</b>	<b>57 1/8</b>	<b>12 7/8</b>	<b>8</b>	<b>160</b>	<b>72</b>	<b>38</b>	<b>1-5/8 - 1-3/16"</b>	<b>6306</b>
60	ME6-6000-RETSA-RD	ME-DR-6-60	69	63 1/8	12 15/16	8	173	78	41	1-5/8 - 1-3/16"	6306
66	<b>ME6-6600-RETSA-RD</b>	<b>ME-DR-6-66</b>	<b>75</b>	<b>69</b>	<b>12 15/16</b>	<b>8</b>	<b>190</b>	<b>84</b>	<b>44</b>	<b>1-5/8 - 1-3/16"</b>	<b>6306</b>
72	ME6-7200-RETSA-RD	ME-DR-6-72	81	75 1/8	12 15/16	8	209	90	46	1-5/8 - 1-3/16"	6306
78	<b>ME6-7800-RETSA-RD</b>	<b>ME-DR-6-78</b>	<b>87</b>	<b>81 1/8</b>	<b>12 15/16</b>	<b>8</b>	<b>228</b>	<b>96</b>	<b>49</b>	<b>1-5/8 - 1-3/16"</b>	<b>6306</b>
84	ME6-8400-RETSA-RD	ME-DR-6-84	93	83 1/8	12 15/16	8	243	102	52	1-5/8 - 1-3/16"	6306
90	<b>ME6-9000-RETSA-RD</b>	<b>ME-DR-6-90</b>	<b>99</b>	<b>93 1/8</b>	<b>12 15/16</b>	<b>8</b>	<b>271</b>	<b>115</b>	<b>58</b>	<b>1-5/8 - 1-3/16"</b>	<b>6306</b>
96	ME6-9600-RETSA-RD	ME-DR-6-96	105	99	12 15/16	8	280	115	58	1-5/8 - 1-3/16"	6306
102	<b>ME6-10200-RETSA-RD</b>	<b>ME-DR-6-102</b>	<b>111</b>	<b>105 1/8</b>	<b>12 15/16</b>	<b>8</b>	<b>298</b>	<b>121</b>	<b>61</b>	<b>1-5/8 - 1-3/16"</b>	<b>6306</b>

**7" RUBBER DISC ROLL**

BELT WIDTH	IDLER PART NUMBER	ROLL PART NUMBER	A	B	C	D	IDLER WEIGHT	ROLL WEIGHT	ROLL ROTATING WEIGHT	SHAFT Ø	BRG TYPE
36	ME7-3600-RETSA-RD	ME-DR-7-36	45	39 1/8	12 4/9	6	119	58	34	1-5/8 - 1-3/16"	6306
42	<b>ME7-4200-RETSA-RD</b>	<b>ME-DR-7-42</b>	<b>51</b>	<b>45 1/8</b>	<b>12 5/8</b>	<b>6</b>	<b>135</b>	<b>65</b>	<b>38</b>	<b>1-5/8 - 1-3/16"</b>	<b>6306</b>
48	ME7-4800-RETSA-RD	ME-DR-7-48	57	51 1/8	12 5/8	8	151	71	41	1-5/8 - 1-3/16"	6306
54	<b>ME7-5400-RETSA-RD</b>	<b>ME-DR-7-54</b>	<b>63</b>	<b>57 1/8</b>	<b>12 7/8</b>	<b>8</b>	<b>166</b>	<b>78</b>	<b>45</b>	<b>1-5/8 - 1-3/16"</b>	<b>6306</b>
60	ME7-6000-RETSA-RD	ME-DR-7-60	69	63 1/8	12 15/16	8	180	85	48	1-5/8 - 1-3/16"	6306
66	<b>ME7-6600-RETSA-RD</b>	<b>ME-DR-7-66</b>	<b>75</b>	<b>69</b>	<b>12 15/16</b>	<b>8</b>	<b>197</b>	<b>92</b>	<b>52</b>	<b>1-5/8 - 1-3/16"</b>	<b>6306</b>
72	ME7-7200-RETSA-RD	ME-DR-7-72	81	75 1/8	12 15/16	8	216	97	54	1-5/8 - 1-3/16"	6306
78	<b>ME7-7800-RETSA-RD</b>	<b>ME-DR-7-78</b>	<b>87</b>	<b>81 1/8</b>	<b>12 15/16</b>	<b>8</b>	<b>368</b>	<b>104</b>	<b>57</b>	<b>1-5/8 - 1-3/16"</b>	<b>6306</b>
84	ME7-8400-RETSA-RD	ME-DR-7-84	93	83 1/8	12 15/16	8	393	111	61	1-5/8 - 1-3/16"	6306
90	<b>ME7-9000-RETSA-RD</b>	<b>ME-DR-7-90</b>	<b>99</b>	<b>93 1/8</b>	<b>12 15/16</b>	<b>8</b>	<b>430</b>	<b>117</b>	<b>64</b>	<b>1-5/8 - 1-3/16"</b>	<b>6306</b>
96	ME7-9600-RETSA-RD	ME-DR-7-96	105	99	12 15/16	8	455	124	68	1-5/8 - 1-3/16"	6306
102	<b>ME7-10200-RETSA-RD</b>	<b>ME-DR-7-102</b>	<b>111</b>	<b>105 1/8</b>	<b>12 15/16</b>	<b>8</b>	<b>484</b>	<b>131</b>	<b>71</b>	<b>1-5/8 - 1-3/16"</b>	<b>6306</b>

NOTES :

1. Also available with 7" drop.
2. Also available with wide mounting centers = A + 6"
3. Dimensions in Inches, Weights in lbs
4. Note actual drop height will be approximately 5/8" smaller for correct tamer operation
5. \* 1-5/8" diameter shaft stepped down to 1-3/16" diameter at the bearing.

Dimensions subject to change without notice. Certified prints available upon request

BW	Roll mm		Base mass kg	Roll mass kg	Roll rot mass kg	MASS
900	994	39 1/8	28	24.00	13.37	51.99699
1050	1146	45 1/8	32	26.84	14.72	58.84167
1200	1298	51 1/8	36	29.69	16.06	65.68635
1350	1450	57 1/8	40	32.53	17.41	72.53103
1500	1602	63 1/8	43	35.38	18.76	78.37571
1650	1754	69	48	38.22	20.10	86.22039
1800	1908	75 1/8	54	40.72	21.08	94.7175
1950	2060	81 1/8	60	43.56	22.43	103.56218
2100	2110	83 1/8	64	46.41	23.77	110.40686
2250	2364	93 1/8	71	52.10	26.47	123.09622
2400	2516	99	75	52.10	26.47	127.09622
2550	2670	105 1/8	80	54.97	27.82	134.97333

40	6306	28
40	6306	32
40	6306	36
40	6306	40
40	6306	43
40	6306	48
40	6306	54
40	6306	60
40	6306	64
40	6306	71
40	6306	75
40	6306	80

BW	Roll mm		Base mass kg	Roll mass kg	Roll rot mass kg	MASS
900	994	39 1/8	28	26.20	15.57	54.19699
1050	1146	45 1/8	32	29.26	17.14	61.26167
1200	1298	51 1/8	36	32.33	18.70	68.32635
1350	1450	57 1/8	40	35.39	20.27	75.39103
1500	1602	63 1/8	43	38.46	21.84	81.45571
1650	1754	69	48	41.52	23.40	89.52039
1800	1908	75 1/8	54	44.02	24.38	98.0175
1950	2060	81 1/8	60	47.08	25.95	107.08218
2100	2110	83 1/8	64	50.15	27.51	114.14686
2250	2364	93 1/8	71	53.21	29.08	124.21154
2400	2516	99	75	56.28	30.65	131.27622
2550	2670	105 1/8	80	59.37	32.22	139.37333

40	6306	28
40	6306	32
40	6306	36
40	6306	40
40	6306	43
40	6306	48
40	6306	54
40	6306	60
40	6306	64
40	6306	71
40	6306	75
40	6306	80