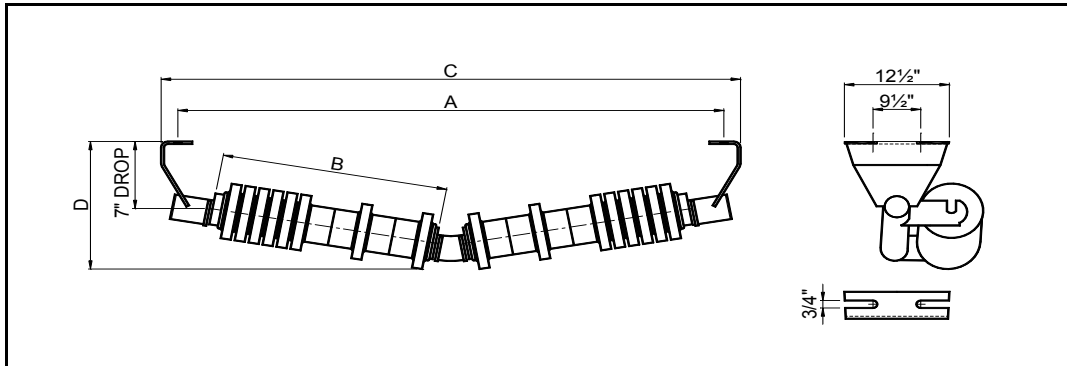




## 10° RUBBER DISC V-RETURN IDLER



### 6" ROLL

BELT WIDTH	IDLER PART NUMBER	ROLL PART NUMBER	A	B	C	D MAX	IDLER WEIGHT	ROLL WEIGHT	ROLL ROTATING WEIGHT	SHAFT Ø	BRG TYPE
36	ME6-3610-VRET-RD	ME-VDR-6-36	45	18 3/4	49	18 1/4	62	21	18	1-5/8 - 1-3/16*	6306
42	<b>ME6-4210-VRET-RD</b>	<b>ME-VDR-6-42</b>	<b>51</b>	<b>22</b>	<b>55</b>	<b>18 3/4</b>	<b>69</b>	<b>23</b>	<b>20</b>	<b>1-5/8 - 1-3/16*</b>	<b>6306</b>
48	ME6-4810-VRET-RD	ME-VDR-6-48	57	25	61	19 1/4	75	25	21	1-5/8 - 1-3/16*	6306
54	<b>ME6-5410-VRET-RD</b>	<b>ME-VDR-6-54</b>	<b>63</b>	<b>28 3/8</b>	<b>67</b>	<b>19 3/4</b>	<b>85</b>	<b>27</b>	<b>23</b>	<b>1-5/8 - 1-3/16*</b>	<b>6306</b>
60	ME6-6010-VRET-RD	ME-VDR-6-60	69	31 1/2	73	20 1/4	119	41	26	1-5/8 - 1-3/16*	6306
66	<b>ME6-6610-VRET-RD</b>	<b>ME-VDR-6-66</b>	<b>75</b>	<b>34 7/8</b>	<b>79</b>	<b>20 3/4</b>	<b>131</b>	<b>44</b>	<b>28</b>	<b>1-5/8 - 1-3/16*</b>	<b>6306</b>
72	ME6-7210-VRET-RD	ME-VDR-6-72	81	38	85	21 1/4	150	52	29	1-5/8 - 1-3/16*	6306
78	<b>ME6-7810-VRET-RD</b>	<b>ME-VDR-6-78</b>	<b>87</b>	<b>41 4/8</b>	<b>91</b>	<b>21 3/4</b>	<b>155</b>	<b>52</b>	<b>29</b>	<b>1-5/8 - 1-3/16*</b>	<b>6306</b>
84	ME6-8410-VRET-RD	ME-VDR-6-84	93	45 1/8	97	22 1/2	170	59	32	1-5/8 - 1-3/16*	6306
90	<b>ME6-9010-VRET-RD</b>	<b>ME-VDR-6-90</b>	<b>99</b>	<b>48 2/8</b>	<b>103</b>	<b>22 3/4</b>	<b>181</b>	<b>63</b>	<b>34</b>	<b>1-5/8 - 1-3/16*</b>	<b>6306</b>
96	ME6-9610-VRET-RD	ME-VDR-6-96	105	51 1/8	109	23 1/4	192	65	35	1-5/8 - 1-3/16*	6306
102	<b>ME6-10210-VRET-RD</b>	<b>ME-VDR-6-102</b>	<b>111</b>	<b>54 2/8</b>	<b>115</b>	<b>23 3/4</b>	<b>203</b>	<b>68</b>	<b>37</b>	<b>1-5/8 - 1-3/16*</b>	<b>6306</b>

### 7" ROLL

BELT WIDTH	IDLER PART NUMBER	ROLL PART NUMBER	A	B	C	D MAX	IDLER WEIGHT	ROLL WEIGHT	ROLL ROTATING WEIGHT	SHAFT Ø	BRG TYPE
36	ME7-3610-VRET-RD	ME-VDR-7-36	45	18 3/4	49	18 1/4	69	24	21	1-5/8 - 1-3/16*	6306
42	<b>ME7-4210-VRET-RD</b>	<b>ME-VDR-7-42</b>	<b>51</b>	<b>22</b>	<b>55</b>	<b>18 3/4</b>	<b>77</b>	<b>27</b>	<b>24</b>	<b>1-5/8 - 1-3/16*</b>	<b>6306</b>
48	ME7-4810-VRET-RD	ME-VDR-7-48	57	25	61	19 1/4	83	29	25	1-5/8 - 1-3/16*	6306
54	<b>ME7-5410-VRET-RD</b>	<b>ME-VDR-7-54</b>	<b>63</b>	<b>28 3/8</b>	<b>67</b>	<b>19 3/4</b>	<b>93</b>	<b>32</b>	<b>27</b>	<b>1-5/8 - 1-3/16*</b>	<b>6306</b>
60	ME7-6010-VRET-RD	ME-VDR-7-60	69	31 1/2	73	20 1/4	128	45	30	1-5/8 - 1-3/16*	6306
66	<b>ME7-6610-VRET-RD</b>	<b>ME-VDR-7-66</b>	<b>75</b>	<b>34 7/8</b>	<b>79</b>	<b>20 3/4</b>	<b>141</b>	<b>49</b>	<b>33</b>	<b>1-5/8 - 1-3/16*</b>	<b>6306</b>
72	ME7-7210-VRET-RD	ME-VDR-7-72	81	38	85	21 1/2	160	57	34	1-5/8 - 1-3/16*	6306
78	<b>ME7-7810-VRET-RD</b>	<b>ME-VDR-7-78</b>	<b>87</b>	<b>41 4/8</b>	<b>91</b>	<b>21 3/4</b>	<b>174</b>	<b>61</b>	<b>34</b>	<b>1-5/8 - 1-3/16*</b>	<b>6306</b>
84	ME7-8410-VRET-RD	ME-VDR-7-84	93	45 1/8	97	22 1/2	181	65	38	1-5/8 - 1-3/16*	6306
90	<b>ME7-9010-VRET-RD</b>	<b>ME-VDR-7-90</b>	<b>99</b>	<b>48 2/8</b>	<b>103</b>	<b>22 3/4</b>	<b>193</b>	<b>69</b>	<b>40</b>	<b>1-5/8 - 1-3/16*</b>	<b>6306</b>
96	ME7-9610-VRET-RD	ME-VDR-7-96	105	51 1/8	109	23 1/4	203	71	41	1-5/8 - 1-3/16*	6306
102	<b>ME7-10210-VRET-RD</b>	<b>ME-VDR-7-102</b>	<b>111</b>	<b>54 2/8</b>	<b>115</b>	<b>23 3/4</b>	<b>214</b>	<b>74</b>	<b>42</b>	<b>1-5/8 - 1-3/16*</b>	<b>6306</b>

NOTES :

1. Also available with wide mounting centers = A + 6"
2. Dimensions in Inches, Weights in lbs
4. V-Return idler also available with 4-1/2 inch drop.
5. \* 1-5/8" diameter shaft stepped down to 1-3/16" diameter at the bearing.

Information subject to change without notice. Certified information available upon request